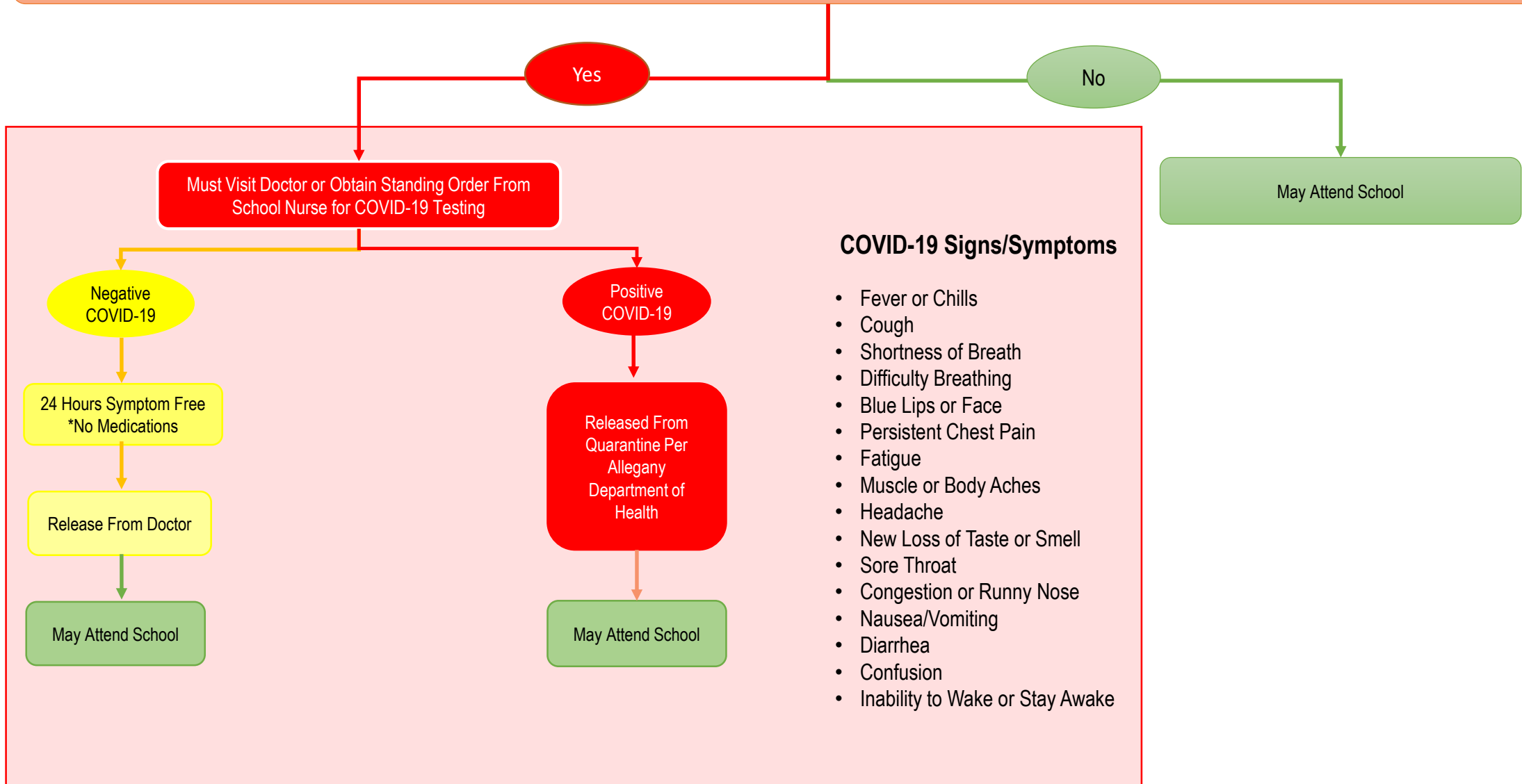


# Alfred- Almond Central School District

## Screening/Referral/Re-Entry Protocol for Faculty/Staff/Students

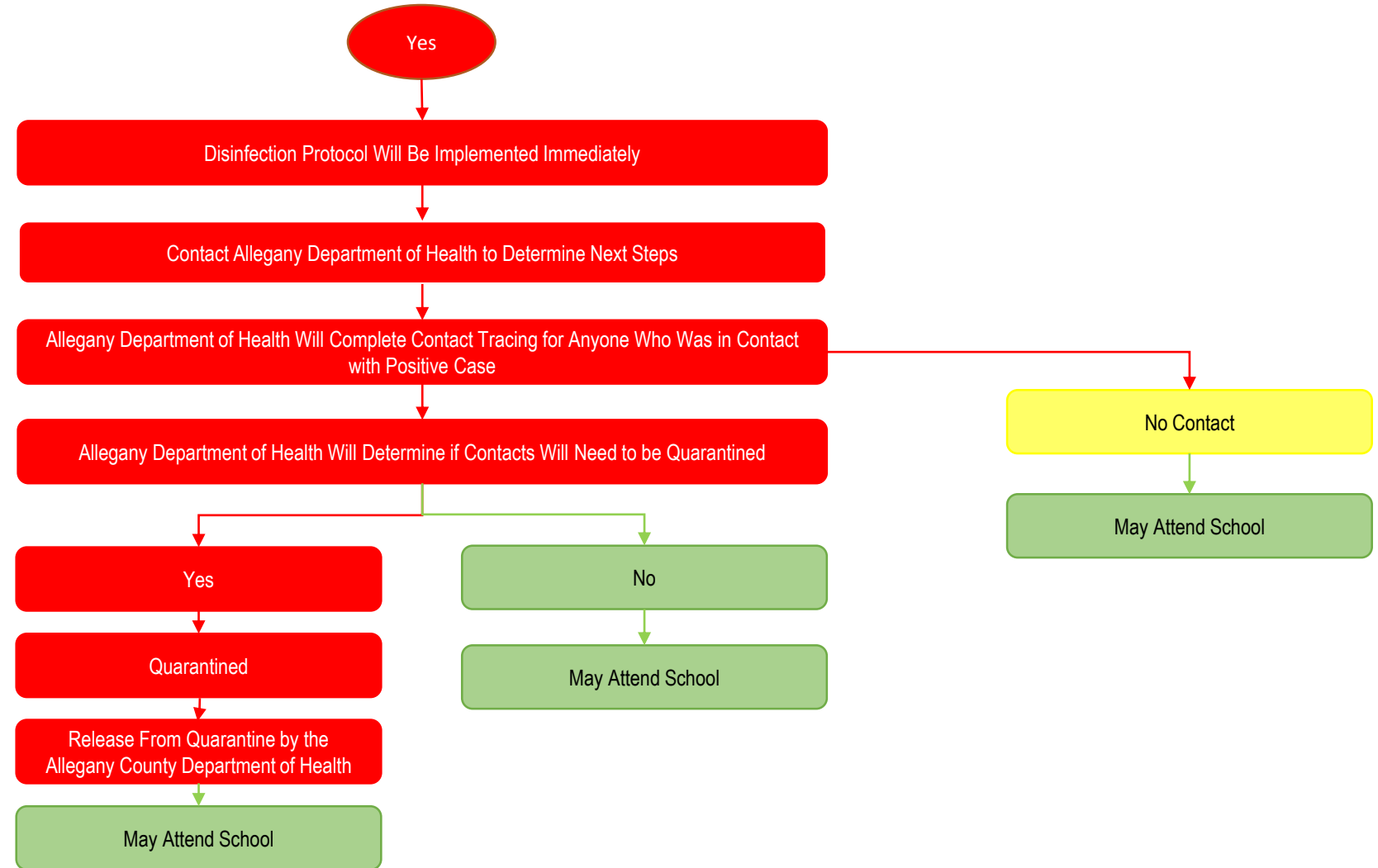
### COVID-19 Signs/Symptoms



# Alfred- Almond Central School District

## Positive COVID-19 Case Protocol for Faculty/Staff/Students

### COVID-19: Positive Case



# ALFRED-ALMOND CENTRAL SCHOOL- HEALTH OFFICE GUIDELINES: (Extension- 6535)

Do they have Signs/Symptoms of COVID-19?

NO

YES

CALL NURSE IMMEDIATELY

Call the Nurse and to determine if student needs to be seen or if it can be managed in classroom

Are they having difficulty breathing? Blue lips or face?

YES

CALL 911

Are they having an allergic reaction? (Bee Sting, Food, Environmental)

NO

YES

CALL NURSE IMMEDIATELY

For Bee Sting- Keep in Class, Call Nurse, Ice pack will be delivered to classroom to treat pain and swelling

Head Injury with possible concussion- loss of consciousness, nausea, vomiting, blurred vision, ringing in ears?

NO

YES

CALL NURSE IMMEDIATELY

Keep In Class, call Nurse to report any minor bumps/bruises

Possible broken bone or sprain? Significant laceration?

NO

YES

CALL NURSE IMMEDIATELY

Call Nurse to request ice

Is it a seizure? Diabetic related health issue? Fainting?

YES

CALL NURSE IMMEDIATELY

Is there inner ear pain?

NO

YES

CALL NURSE FOR FURTHER DIRECTION

Call the Nurse and to determine if student needs to be seen or if it can be managed in classroom

## Things That Can Be Managed In The Classroom

- Loose Teeth
- Lost Tooth
- Minor Colds
- Old Injuries
- Chapped Lips
- Hunger
- Bug Bites
- Minor Bumps/Bruises
- Minor Cuts/Scrapes

NOT LISTED? UNSURE?  
CALL NURSE  
X-6535

## COVID-19 Signs/Symptoms

- -Fever or Chills
- -Cough
- -Shortness of Breath/Difficulty Breathing
- -Blue Lips or Face
- -Persistent Chest Pain
- -Fatigue
- -Muscle or Body Aches
- -Headache
- -New Loss of Taste or Smell
- -Sore Throat
- -Congestion or Runny Nose
- -Nausea/Vomiting
- -Diarrhea
- Confusion
- Inability to Wake or Stay Awake